

Polished Concrete Color

Compatible Dyes for Formula One™ Polished Concrete Floors

3. Choose COLOR!

SCOFIELD® Formula One™ Liquid Dye Concentrate is a penetrating, translucent dye concentrate designed to color interior concrete surfaces prior to being sealed, densified, or polished. It is ideal for use on older interior concrete slabs, slabs where acid stain cannot be used, or areas that must be quickly returned to service. For projects where a natural concrete color is desired, G388 Soft Gray is recommended.



4135 Merlot



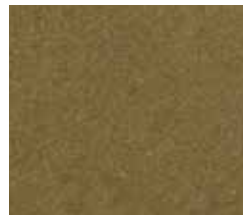
1395 Driftwood



1435 Inca Gold



3935 Ponderosa



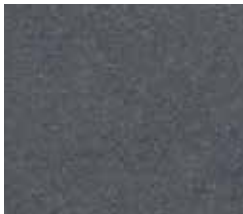
1335 Beach Sand



4405 Rustic Bark



2045 Georgia Clay



3055 Storm Cloud



1445 Cold Steel



2145 Grecian Gray



4915 Slash Pine



1330 Aquamarine



1385 Douglas Fir



5195 Snow Pea



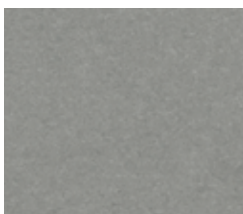
1995 Frost Green



1705 Emerald Green



1275 Bahama Blue



G388 Soft Gray



0510 Black



1255 Aztec Red



1245 Leather



6085 Winter Sunset

Prior to beginning the job, consult the appropriate SCOFIELD Formula One Tech-Data sheets.

Contact Scofield Customer Service at 800-800-9900, or visit us on the web at www.scofield.com.